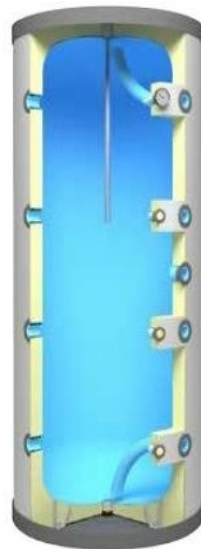


AQUAHEAT HOT WATER TANKS

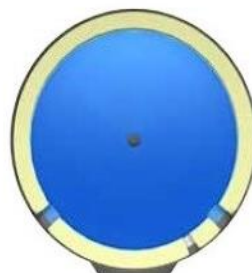
MAKE: KODSAN		KAT 500	KAT 800	KAT 1000	KAT 1500
Volume	liter	516	800	1000	1500
Maximum Operating Temperature	°C	95			
Body Operating Pressure	bar	10			
Body Diameter	mm	750	900	1000	1120
Total Height	mm	1800	2100	2070	2300
Domestic Hot Water Outlet	inch	1 1/4"	1 1/2"		
Cleaning Flange	inch	4	5		
Electric Heater	inch	1 1/2"	2"		
Insulation Type & Thickness	mm	PU/50	SP/80		
In accordance with EN15332 Energy Efficiency Standard					
External Cover Coating		Electrostatic Powder Painted Steel	Artificial Leather / IXPE / ABS		
Internal Coating		Enameled (glass-lined) in accordance with DIN 4753-3 standard			
Gross Weight	kg	155	225	237	332
Energy Heat Loss	kWh/d	2.63	3.61	4.24	-
Tipping Height	mm	1970	2300	2320	2580
Thermometer & Sensor Connection	inch	1/2"			
Electric Heater		Electric Heater can be installed – Optional			
Magnesium Anode Connection	inch	1 1/4"			
Manufacturer's Warranty		5 Years			



Outer Appearance



Side Section View



Top Section View

